

**SMELETY PRÉSENTE**

# EXCURSION

UNE FAMILLE MARSEILLAISE

**PAR FANNY GARCIA & JACK USINE**



VENT D  
REDOU  
FORDA  
MESSA  
MANUF

**AU DÉPART,  
UNE RÉSIDENCE D'UNE SEMAINE  
À MARSEILLE, FIN 2011, À L'INVITATION  
DE FOTOKINO.<sup>1</sup> SEPT JOURS DURANT  
LESQUELS NOUS AVONS PARCOURU LES RUES  
DE LA VILLE DE MANIÈRE INSTINCTIVE.**

**CES RANDONNÉES NOUS ONT PERMIS  
D'ÉTABLIR UN ÉTAT DES LIEUX SUBJECTIF  
DU PETIT PATRIMOINE VISUEL,  
SOUS FORME DE CARNET DE VOYAGE.<sup>2</sup>**

**À PARTIR DE CES RECHERCHES,  
NOUS AVONS VOULU METTRE EN AVANT  
CERTAINES INSCRIPTIONS REMARQUABLES  
EN CRÉANT UNE FAMILLE DE CARACTÈRES.**

**COMPOSÉ DE CINQ ÉCRITURES  
AUX TEMPÉRMENTS BIEN MARQUÉS  
ET D'UN JEU DE « DINGBATS » HÉTÉROCLITES,  
CE MEDLEY TYPOGRAPHIQUE SYNTHÉTISE  
L'ESPRIT DE NOTRE VOYAGE  
DANS MARSEILLE.**

<sup>1</sup> [WWW.FOTOKINO.ORG](http://WWW.FOTOKINO.ORG)

<sup>2</sup> CF. « EXCURSION, RANDONNÉE GRAPHIQUE À TRAVERS  
LES RUES DE MARSEILLE », ÉDITIONS SAINTE-MACHINE  
[WWW.SAINTE-MACHINE.COM](http://WWW.SAINTE-MACHINE.COM)



CHEZ FOTOKINO

# MA

EXCURSION CRYPTÉE

TYP0 EN GUISE D'EX-VOTO  
INCISE SOIT-ELLE

# RS

EXCURSION MIDI

LINÉALE CHANCELANTE  
POUR PARLER DANS LE VENT

# MI

EXCURSION FAIT DIVERS

LETTRES SCULPTURALES  
QUI FONT LES GROS TITRES

# LL

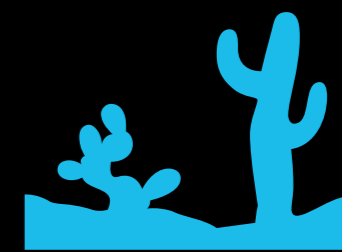
EXCURSION MÉTIER

CARACTÈRE DE FAÇADE  
POUR APPÂTER LE CHALAND

# E!

EXCURSION POSTE

ÉCRITURE QUI TRANSPORTE  
VOS MESSAGES AVEC ALLURE



EXCURSION FADABATS

ILLUSTRATIONS, ORNEMENTS  
& SYMBOLES EN TOUS GENRES

# GARDE

BASILIQUE NOTRE-DAME-DE-LA-GARDE



# LA PÊCHE



EXCURSION CRYPTÉE

EXCURSION CRYPTÉE • CORPS 216

A D I E U

EXCURSION CRYPTÉE • CORPS 158

VIERGE ?

EXCURSION CRYPTÉE • CORPS 120

EX-VOTO NS

EXCURSION CRYPTÉE • CORPS 73

« ANONYME, 1864 »

EXCURSION CRYPTÉE • CORPS 54

TALES FROM THE CRYPT

EXCURSION CRYPTÉE • CORPS 27

LES FORGES & CHANTIERS DE LA MÉDITERRANÉE

EXCURSION CRYPTÉE • JEUX DE CARACTÈRES

A B C D E F G H

I J K L M N O P

Q R S T U V W

X Y Z & 1 2 3 4

5 6 7 8 9 0 ! ?

À Á Â Ã Ä Å Æ Ç È É Ê Ë

Ì Í Î Ï Ñ Ò Ó Ô Õ Ö Ø

Ù Ú Û Ü Ý Þ ß à á â ã

ä å æ ç è é ê ë ì í î ï ð

ñ ò ó ô õ ö ø ù ú û ü ý ÿ

ž ž ž ð . , : ; ... ! i ? ð \* † ‡ § ¶ @ / \ | |

• · ~ - — \_ , „ ‘ ’ “ ” ‹ › « » ( ) { } [ ] %

‰ ¼ ½ ¾ - + ± × ÷ = ≠ ≈ ~ ¬ < > ≤ ≥ ^

' " ° ∞ № # \$ € £ ¥ € f x © ® ™ a o

ANARĀŠKIELĀ, AZƏRBAYCANCA,  
 BAHASA INDONESIA, BOSANSKI,  
 CATALÀ, ČEŠTINA, CYMRAEG,  
 DANSK, DEUTSCH, DINÉ BIZAAD,  
 EESTI, ENGLISH, ESPAÑOL,  
 ESPERANTO, EUSKARA,  
 FØROYSKT, FRANÇAIS, GAELIGE,  
 GÀIDHLIG, GALEGO, HRVATSKI,  
 ÍSLENSKA, ITALIANO, KERNOWEK,  
 LATVIEŠU, LIETUVIŲ, MAGYAR,  
 MALTI, MĀORI, NEDERLANDS,  
 NORSK, OCCITAN, ‘ŌLELO HAWAI‘I,  
 POLSKI, PORTUGUÊS,  
 ROMÂNĂ, SHQIP, SLOVENČINA,  
 SLOVENŠČINA, SRPSKA,  
 SVENSKA, TÜRKÇE...

JEU STYLISTIQUE 1 « NUMÉRO » (SS01) #1, N°1, N<sup>o</sup>1 = №1

JEU STYLISTIQUE 2 « SZÉKÉZ CAPITAL » (SS02) STRASSE = STRAßE

VARIANTES STYLISTIQUES = SS01 + SS02

MARSEILLE IS THE SECOND LARGEST CITY IN FRANCE, AFTER PARIS, WITH A POPULATION OF 853,000 WITHIN ITS ADMINISTRATIVE LIMITS ON A LAND AREA OF 240.62 KM<sup>2</sup>.

IT IS THE THIRD LARGEST URBAN AREA AND METROPOLITAN AREA AFTER LYON WITH A POPULATION OF AROUND 1.6 MILLION.

MARSEILLE IS THE CAPITAL OF THE PROVENCE-ALPES-CÔTE D'AZUR REGION, AS WELL AS THE CAPITAL OF THE BOUCHES-DU-RHÔNE DEPARTMENT. ITS INHABITANTS ARE CALLED MARSEILLAIS IN FRENCH AND MARSELHÉS IN OCCITAN. (WIKIPEDIA)

MARSEILLE IS THE CAPITAL OF THE PROVENCE-ALPES-CÔTE D'AZUR REGION, AS WELL AS THE CAPITAL OF THE BOUCHES-DU-RHÔNE DEPARTMENT. ITS INHABITANTS ARE CALLED MARSEILLAIS IN FRENCH AND MARSELHÉS IN OCCITAN. (WIKIPEDIA)

MARSEILLE IS THE SECOND LARGEST CITY IN FRANCE, AFTER PARIS, WITH A POPULATION OF 853,000 WITHIN ITS ADMINISTRATIVE LIMITS ON A LAND AREA OF 240.62 KM<sup>2</sup>. IT IS THE THIRD LARGEST URBAN AREA AND METROPOLITAN AREA AFTER LYON WITH A POPULATION OF AROUND 1.6 MILLION. LOCATED ON THE SOUTHEAST COAST OF FRANCE, MARSEILLE IS FRANCE'S LARGEST CITY ON THE MEDITERRANEAN COAST AND LARGEST COMMERCIAL PORT. MARSEILLE IS THE CAPITAL OF THE PROVENCE-ALPES-CÔTE D'AZUR REGION, AS WELL AS THE CAPITAL OF THE BOUCHES-DU-RHÔNE DEPARTMENT. ITS INHABITANTS ARE CALLED MARSEILLAIS IN FRENCH AND MARSELHÉS IN OCCITAN. (WIKIPEDIA)

# PAROLES



N° 31, RUE CAISSERIE



# EN



# L'AIR

EXCURSION MIDI

EXCUR/10N MIDI • CORPS 252

Z E F S

EXCUR/10N MIDI • CORPS 170

DÉGUN

EXCUR/10N MIDI • CORPS 120

VERBIAGE

EXCUR/10N MIDI • CORPS 88

ESPÉLOUFIDE

EXCUR/10N MIDI • CORPS 56

EST-CE QU'AU FOND?

EXCUR/10N MIDI • CORPS 46

“BELSUNCE BREAKDOWN”

EXCUR/10N MIDI • JEU DE CARACTÈRES

A B C D E F G H

I J K L M N O P

Q R S T U V W

X Y Z & 1 2 3 4

5 6 7 8 9 0 ! ?

À Á Â Ã Ä Å Æ É Ê Ë Ì Í Î Ï

È É Ê Ë Ì Í Î Ï Ñ Ò Ó Ô Õ

Ö Õ Ö Ø Æ Ó Ñ Ò Ó Ô Õ

Ö Õ Ö Ø Æ Ó Ñ Ò Ó Ô Õ

Ù Ú Û Ü Ý Þ ß à á â ã

ä å æ ç è é ê ë ì í î ï

ñ ò ó ô õ ö ø ù ú û ü ý þ

ÿ ÿ ÿ ÿ ÿ ÿ ÿ ÿ ÿ ÿ

’ ’ ’ ’ ’ ’ ’ ’ ’ ’



ANARĀŠKIELĀ, AZƏRBAYCANCA,  
BAHASA INDONÉSIA, BOSANSKI,  
CATALÀ, ČEŠTINA, CYMRAEG,  
DANSK, DEUTSCH, DINÉ BIZAAD,  
EESTI, ENGLISH, ESPAÑOL,  
ESPERANTO, EUSKARA,  
FØROYSKT, FRANÇAIS, GAELIGE,  
GÀIDHLIG, GALEGO, HRVATSKI,  
ÍSLENSKA, ITALIANO, KERNOWEK,  
LATVIEŠU, LIETUVIŲ, MAGYAR,  
MALTI, MĀORI, NEDERLANDS,  
NORSK, OCCITAN, ‘ŌLELO HAWAI‘I,  
POLSKI, PORTUGUÊS,  
ROMÂNĂ, SHQIP, SLOVENČINA,  
SLOVENŠČINA, SRPSKA,  
SVENSKA, TÜRKÇE...

JEU STYLISTIQUE 1 « NUMÉRO » (SS01) #|, N°|, N°| = N°|

JEU STYLISTIQUE 2 « ESZETT CAPITAL » (SS02) STRASSE = STRAßE

VARIANTES STYLISTIQUES = SS01 + SS02

MARSEILLE IS THE SECOND LARGEST CITY IN FRANCE, AFTER PARIS, WITH A POPULATION OF 853,000 WITHIN ITS ADMINISTRATIVE LIMITS ON A LAND AREA OF 240.62 KM<sup>2</sup>.

IT IS THE THIRD LARGEST URBAN AREA AND METROPOLITAN AREA AFTER LYON WITH A POPULATION OF AROUND 1.6 MILLION.

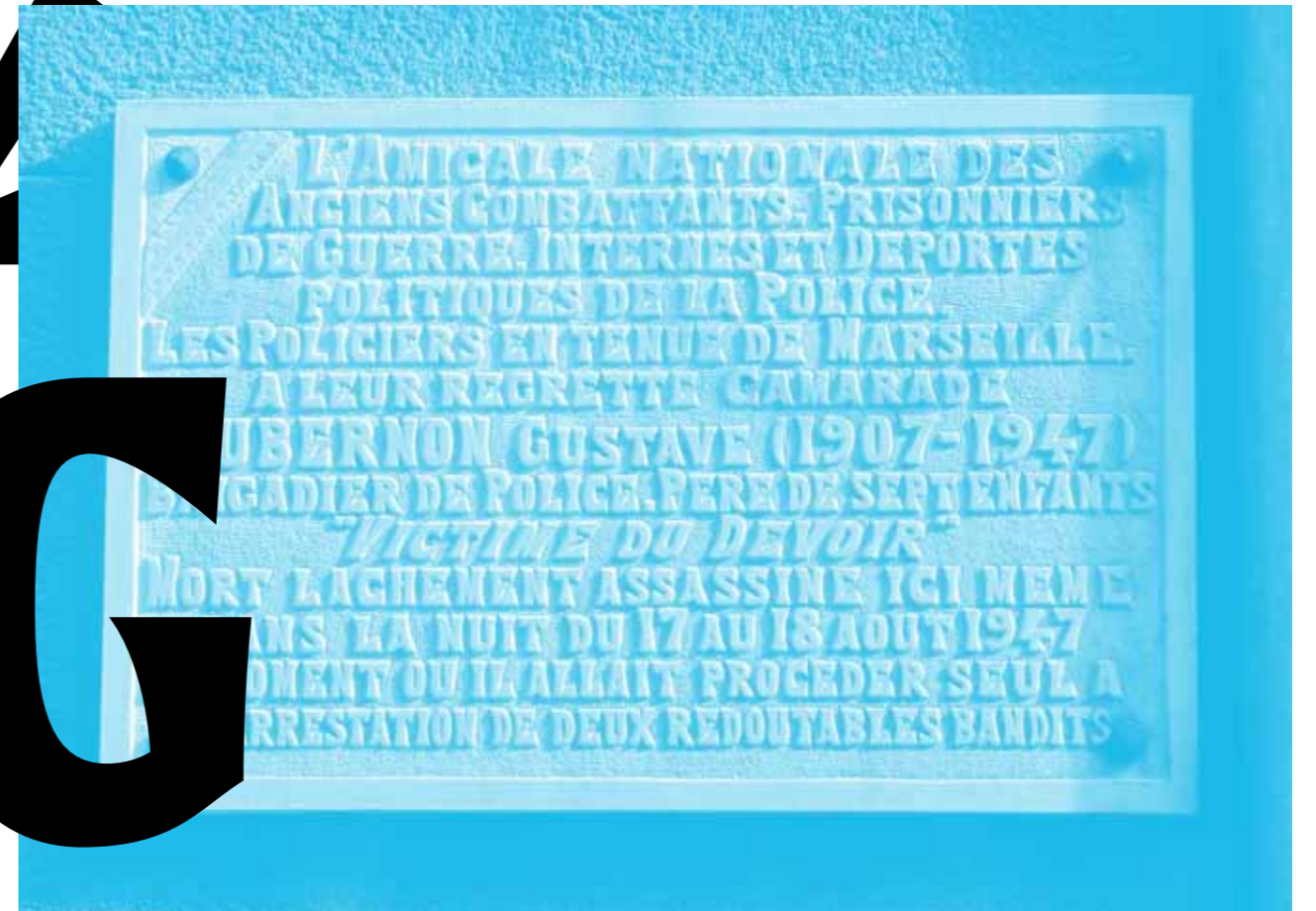
LOCATED ON THE SOUTHEAST COAST OF FRANCE, MARSEILLE IS FRANCE'S LARGEST CITY ON THE MEDITERRANEAN COAST AND LARGEST COMMERCIAL PORT.

MARSEILLE IS THE CAPITAL OF THE PROVENCE-ALPES-CÔTE D'AZUR REGION, AS WELL AS THE CAPITAL OF THE BOUCHES-DU-RHÔNE DEPARTMENT. ITS INHABITANTS ARE CALLED MARSEILLAIS IN FRENCH AND MARSELHÉS IN OCCITAN. (WIKIPEDIA)

MARSEILLE IS THE SECOND LARGEST CITY IN FRANCE, AFTER PARIS, WITH A POPULATION OF 853,000 WITHIN ITS ADMINISTRATIVE LIMITS ON A LAND AREA OF 240.62 KM<sup>2</sup>. IT IS THE THIRD LARGEST URBAN AREA AND METROPOLITAN AREA AFTER LYON WITH A POPULATION OF AROUND 1.6 MILLION. LOCATED ON THE SOUTHEAST COAST OF FRANCE, MARSEILLE IS FRANCE'S LARGEST CITY ON THE MEDITERRANEAN COAST AND LARGEST COMMERCIAL PORT. MARSEILLE IS THE CAPITAL OF THE PROVENCE-ALPES-CÔTE D'AZUR REGION, AS WELL AS THE CAPITAL OF THE BOUCHES-DU-RHÔNE DEPARTMENT. ITS INHABITANTS ARE CALLED MARSEILLAIS IN FRENCH AND MARSELHÉS IN OCCITAN. (WIKIPEDIA)

DE

N° 22, RUE VILLENEUVE



SANG

FROID

EXCURSION FAIT DIVERS

EXCURSION FAIT DIVERS • CORPS 276

PAN!

EXCURSION FAIT DIVERS • CORPS 208

KNIFE

EXCURSION FAIT DIVERS • CORPS 136

OUTRAGE

EXCURSION FAIT DIVERS • CORPS 94

MENU LARCIN

EXCURSION FAIT DIVERS • CORPS 59

FRENCH CONNECTION

EXCURSION FAIT DIVERS • CORPS 29

AMBIANCE SCANDALE, DANSE DE VANDALES

EXCURSION FAIT DIVERS • JEU DE CARACTÈRES

A B C D E F G H

I J K L M N O P

Q R S T U V W

X Y Z & 1 2 3 4

5 6 7 8 9 0 ! ?

À Á Â Ã Ä Å Æ Ç È É Ê Ë

Ê Ë Ì Í Î Ï Ñ Ò Ó Ô Õ

Ö Ø Ñ Ñ Ñ Ñ Ñ Ñ Ñ Ñ Ñ Ñ

Ò Ó Ô Õ Ö Ø Ñ Ñ Ñ Ñ Ñ Ñ Ñ

Ù Ú Û Ü Ý Þ ß à á â ã

ä å æ ç è é ê ë ì í î ï ð

ñ ò ó ô õ ö ø ù ú û ü ý þ

ÿ ÿ ÿ ÿ ÿ ÿ ÿ ÿ ÿ ÿ ÿ ÿ

ÿ ÿ ÿ ÿ ÿ ÿ ÿ ÿ ÿ ÿ ÿ ÿ

ÿ ÿ ÿ ÿ ÿ ÿ ÿ ÿ ÿ ÿ ÿ ÿ

**ANARĀŠKIELĀ, AZƏRBAYCANCA,  
BAHASA INDONÉSIA, BOSANSKI,  
CATALÀ, ČEŠTINA, CYMRAEG,  
DANSK, DEUTSCH, DINÉ BIZAAD,  
EESTI, ENGLISH, ESPAÑOL,  
ESPERANTO, EUSKARA,  
FØROYSKT, FRANÇAIS, GAÉILGE,  
GÀIDHLIG, GALEGO, HRVATSKI,  
ÍSLENSKA, ITALIANO, KERNOWEK,  
LATVIEŠU, LIETUVIŲ, MAGYAR,  
MALTI, MĀORI, NEDERLANDS,  
NORSK, OCCITAN, 'ŌLELO HAWAI'I,  
POLSKI, PORTUGUÊS,  
ROMÂNĂ, SHQIP, SLOVENČINA,  
SLOVENŠČINA, SRPSKA,  
SVENSKA, TÜRKÇE...**

JEU STYLISTIQUE 1 « NUMÉRO » (SS01) **#1, N°1, N<sup>o</sup>1 = N<sup>o</sup>1**

JEU STYLISTIQUE 2 « ESZETT CAPITAL » (SS02) **STRASSE = STRAßE**

VARIANTES STYLISTIQUES = SS01 + SS02

**MARSEILLE IS THE SECOND LARGEST  
CITY IN FRANCE, AFTER PARIS, WITH  
A POPULATION OF 853,000 WITHIN  
ITS ADMINISTRATIVE LIMITS ON  
A LAND AREA OF 240.62 KM<sup>2</sup>.**

**IT IS THE THIRD LARGEST URBAN AREA AND  
METROPOLITAN AREA AFTER LYON WITH A  
POPULATION OF AROUND 1.6 MILLION.**

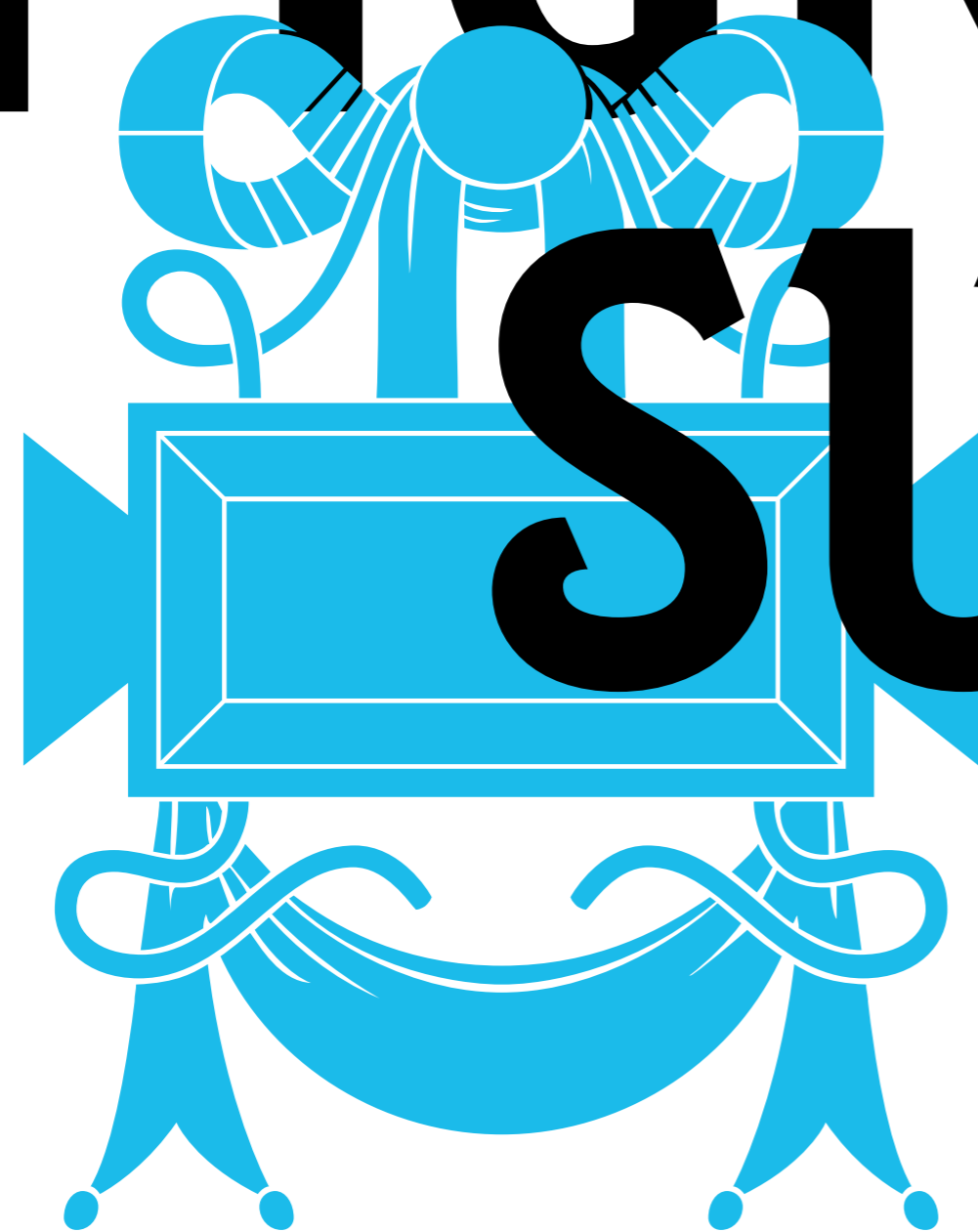
**LOCATED ON THE SOUTHEAST COAST OF FRANCE, MARSEILLE  
IS FRANCE'S LARGEST CITY ON THE MEDITERRANEAN  
COAST AND LARGEST COMMERCIAL PORT.**

**MARSEILLE IS THE CAPITAL OF THE PROVENCE-ALPES-CÔTE D'AZUR REGION, AS WELL  
AS THE CAPITAL OF THE BOUCHES-DU-RHÔNE DEPARTMENT. ITS INHABITANTS ARE  
CALLED MARSEILLAIS IN FRENCH AND MARSELHÉS IN OCCITAN. (WIKIPEDIA)**

**MARSEILLE IS THE SECOND LARGEST CITY IN FRANCE, AFTER PARIS, WITH A POPULATION OF 853,000 WITHIN ITS  
ADMINISTRATIVE LIMITS ON A LAND AREA OF 240.62 KM<sup>2</sup>. IT IS THE THIRD LARGEST URBAN AREA AND METROPOLITAN  
AREA AFTER LYON WITH A POPULATION OF AROUND 1.6 MILLION. LOCATED ON THE SOUTHEAST COAST OF FRANCE,  
MARSEILLE IS FRANCE'S LARGEST CITY ON THE MEDITERRANEAN COAST AND LARGEST COMMERCIAL PORT. MARSEILLE  
IS THE CAPITAL OF THE PROVENCE-ALPES-CÔTE D'AZUR REGION, AS WELL AS THE CAPITAL OF THE BOUCHES-DU-RHÔNE  
DEPARTMENT. ITS INHABITANTS ARE CALLED MARSEILLAIS IN FRENCH AND MARSELHÉS IN OCCITAN. (WIKIPEDIA)**

# PIGNON

N° 48, RUE SAINT-SAVOURNIN



# SUR

# RUE

EXCURSION MÉTIER



ANARĀŠKIELĀ, AZƏRBAYCANCA,  
 BAHASA INDONÉSIA, BOSANSKI,  
 CATALÀ, ČEŠTINA, CYMRAEG,  
 DANSK, DEUTSCH, DINÉ BIZAAD,  
 EESTI, ENGLISH, ESPAÑOL,  
 ESPERANTO, EUSKARA,  
 FØROYSKT, FRANÇAIS, GAELIGE,  
 GàIDHLIG, GALEGO, HRVATSKI,  
 ÍSLENSKA, ITALIANO, KERNOWEK,  
 LATVIEŠU, LIETUVIŲ, MAGYAR,  
 MALTI, MĀORI, NEDERLANDS,  
 NORSK, OCCITAN, ‘ŌLELO HAWAI‘I,  
 POLSKI, PORTUGUÊS,  
 ROMÂNĂ, SHQIP, SLOVENČINA,  
 SLOVENŠČINA, SRPSKA,  
 SVENSKA, TÜRKÇE...

JEU STYLISTIQUE 1 « NUMÉRO » (SS01) #1, N°1, N<sup>o</sup>1 = N<sup>o</sup>1

JEU STYLISTIQUE 2 « ESZETT CAPITAL » (SS02) STRASSE = STRAßE

MARSEILLE IS THE SECOND LARGEST CITY IN FRANCE, AFTER PARIS, WITH A POPULATION OF 853,000 WITHIN ITS ADMINISTRATIVE LIMITS ON A LAND AREA OF 240.62 KM<sup>2</sup>.

IT IS THE THIRD LARGEST URBAN AREA AND METROPOLITAN AREA AFTER LYON WITH A POPULATION OF AROUND 1.6 MILLION.

LOCATED ON THE SOUTHEAST COAST OF FRANCE, MARSEILLE IS FRANCE'S LARGEST CITY ON THE MEDITERRANEAN COAST AND LARGEST COMMERCIAL PORT.

MARSEILLE IS THE CAPITAL OF THE PROVENCE-ALPES-CÔTE D'AZUR REGION, AS WELL AS THE CAPITAL OF THE BOUCHES-DU-RHÔNE DEPARTMENT. ITS INHABITANTS ARE CALLED MARSEILLAIS IN FRENCH AND MARSELHÉS IN OCCITAN. (WIKIPEDIA)

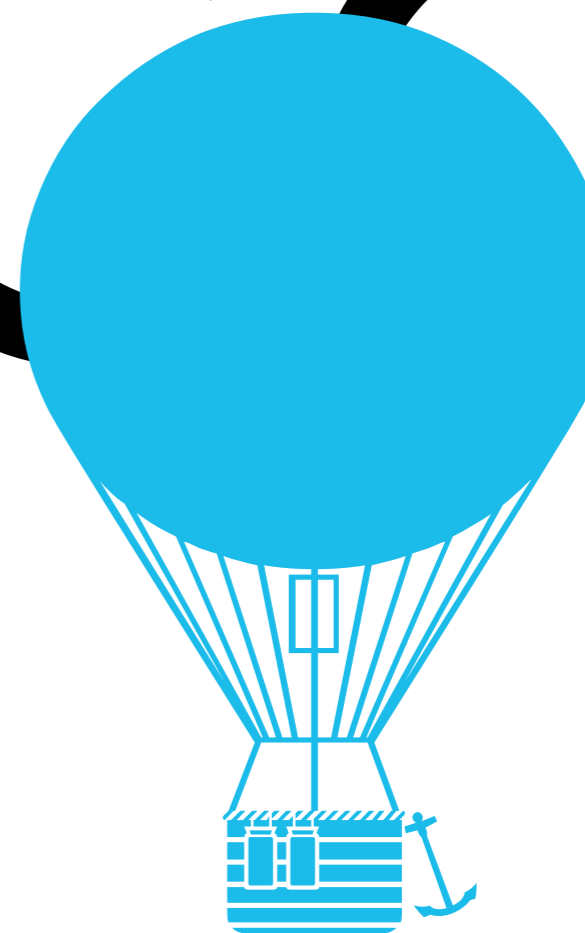
MARSEILLE IS THE SECOND LARGEST CITY IN FRANCE, AFTER PARIS, WITH A POPULATION OF 853,000 WITHIN ITS ADMINISTRATIVE LIMITS ON A LAND AREA OF 240.62 KM<sup>2</sup>. IT IS THE THIRD LARGEST URBAN AREA AND METROPOLITAN AREA AFTER LYON WITH A POPULATION OF AROUND 1.6 MILLION. LOCATED ON THE SOUTHEAST COAST OF FRANCE, MARSEILLE IS FRANCE'S LARGEST CITY ON THE MEDITERRANEAN COAST AND LARGEST COMMERCIAL PORT. MARSEILLE IS THE CAPITAL OF THE PROVENCE-ALPES-CÔTE D'AZUR REGION, AS WELL AS THE CAPITAL OF THE BOUCHES-DU-RHÔNE DEPARTMENT. ITS INHABITANTS ARE CALLED MARSEILLAIS IN FRENCH AND MARSELHÉS IN OCCITAN. (WIKIPEDIA)

# FRANCO



N° 79, RUE SAINT-PIERRE

# DE



# PORT

EXCURSION POSTE



EXCURSION POSTE • CORPS 244

1932

EXCURSION POSTE • CORPS 184

SPAM

EXCURSION POSTE • CORPS 132

TIMBRÉ

EXCURSION POSTE • CORPS 96

ÇA VA P.T.T.

EXCURSION POSTE • CORPS 56

FACTEUR CHEVAL

EXCURSION POSTE • CORPS 39

ADRESSE ÉLECTRONIQUE

EXCURSION POSTE • JEU DE CARACTÈRES

A B C D E F G H

I J K L M N O P

Q R S T U V W

X Y Z & 1 2 3 4

5 6 7 8 9 0 ! ?

À Á Â Ã Ä Å Æ Ç È É Ê Ë Ì Í Î Ï

Ï Ì Í Î Ï Ñ Ò Ó Ô Õ

Ö Ø Æ Ó Ô Õ Ö Ø Æ Ó Ô Õ

Ù Ú Û Ü Ý Þ ß à á â ã

ä å æ ç è é ê ë ì í î ï

ñ ò ó ô õ ö ø ù ú û ü ý þ ÿ

• - - - - - , " ' ' " " < > « » ( ) { } [ ] %

% ¼ ½ ¾ - + ± × ÷ = ≠ ≈ ~ ¬ < > ≤ ≥ ^

' " ° ∞ № # \$ % & ' ( ) \* + , - . / : ;

EXCURSION POSTE • LANGAGES / SUPPORTÉS

ANARĀŠKIELĀ, AZƏRBAYCANCA,  
BAHASA INDONÉSIA, BOSANSKI,  
CATALÀ, ČEŠTINA, CYMRAEG,  
DANSK, DEUTSCH, DINÉ BIZAAD,  
EESTI, ENGLISH, ESPAÑOL,  
ESPERANTO, EUSKARA,  
FØROYSKT, FRANÇAIS, GAELIGE,  
GÀIDHLIG, GALEGO, HRVATSKI,  
ÍSLENSKA, ITALIANO, KERNOWEK,  
LATVIEŠU, LIETUVIŲ, MAGYAR,  
MALTI, MĀORI, NEDERLANDS,  
NORSK, OCCITAN, 'ŌLELO HAWAI'I,  
POLSKI, PORTUGUÊS,  
ROMÂNĂ, SHQIP, SLOVENČINA,  
SLOVENŠČINA, SRPSKA,  
SVENSKA, TÜRKÇE...

EXCURSION POSTE • FONCTIONS / OPENTYPE

JEU STYLISTIQUE 1 « NUMÉRO » (//01) #1, N°1, N°1 = N°1

JEU STYLISTIQUE 2 « EZZETT CAP. » (//02) STRASSE = STRASSE

VARIANTE / STYLISTIQUE / = //01 + //02

EXCURSION POSTE • 30/34 PT

MARSEILLE IS THE SECOND  
LARGEST CITY IN FRANCE, AF-  
TER PARIS, WITH A POPULA-  
TION OF 853,000 WITHIN ITS  
ADMINISTRATIVE LIMITS ON A  
LAND AREA OF 240.62 KM².

EXCURSION POSTE • 24/28 PT

IT IS THE THIRD LARGEST URBAN  
AREA AND METROPOLITAN AREA  
AFTER LYON WITH A POPULATION  
OF AROUND 1.6 MILLION.

EXCURSION POSTE • 18/22 PT

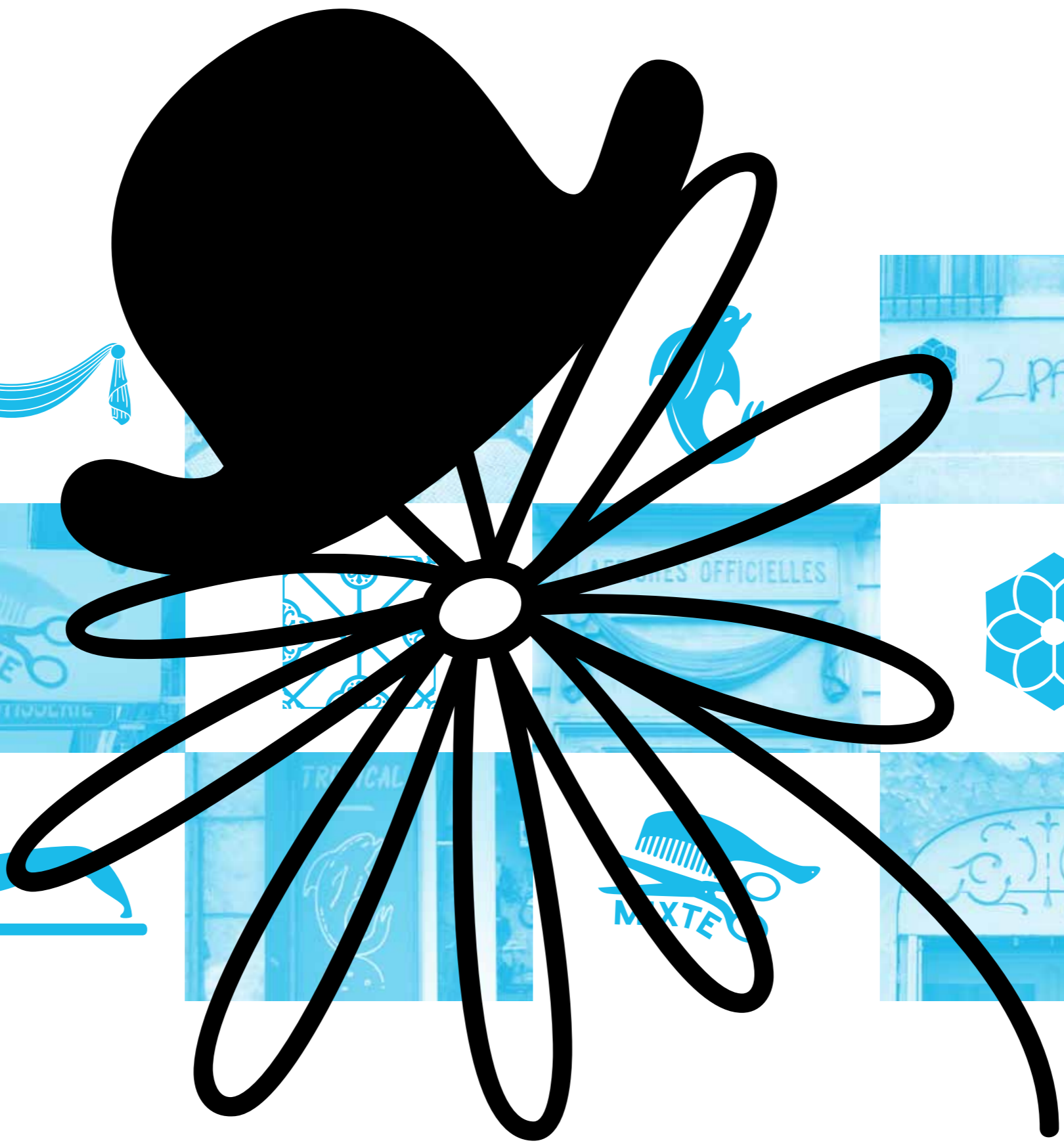
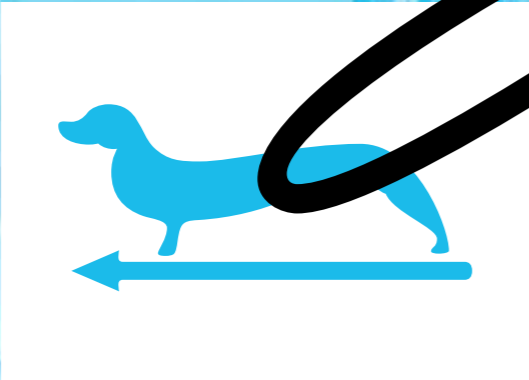
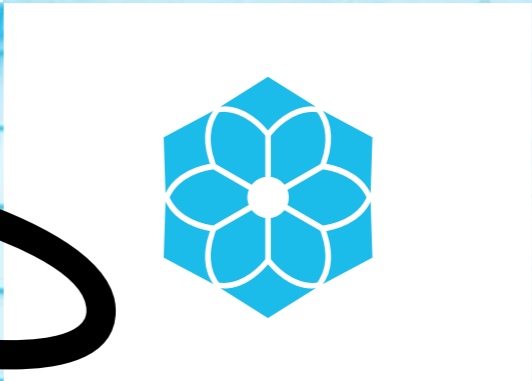
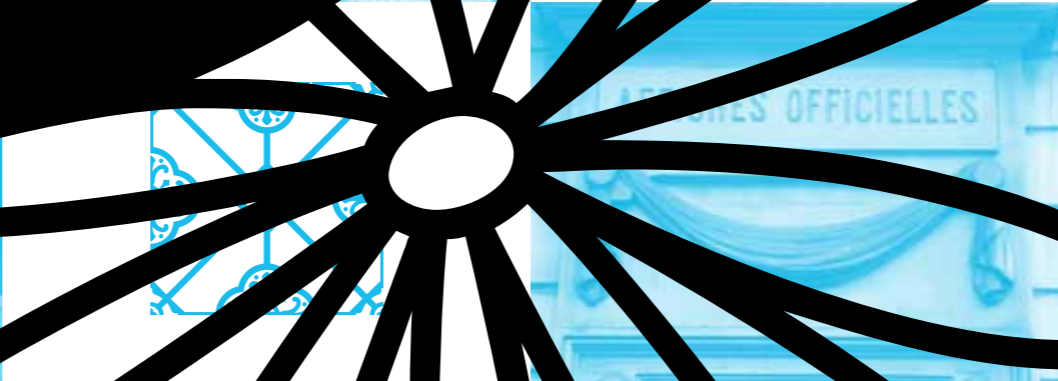
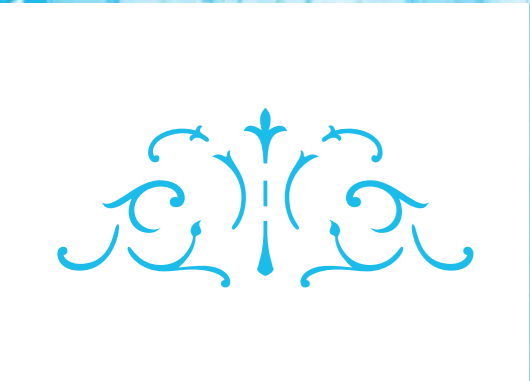
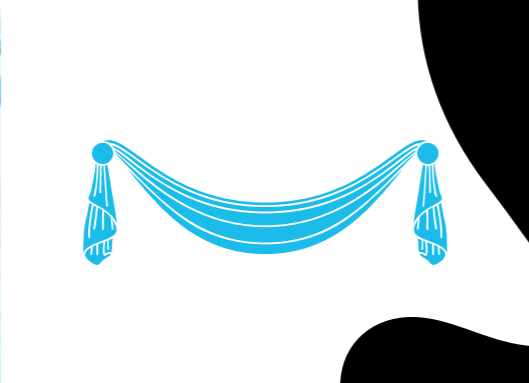
LOCATED ON THE SOUTHEAST COAST OF  
FRANCE, MARSEILLE IS FRANCE'S LARGEST  
CITY ON THE MEDITERRANEAN COAST  
AND LARGEST COMMERCIAL PORT.

EXCURSION POSTE • 14/18 PT

MARSEILLE IS THE CAPITAL OF THE PROVENCE-ALPES-CÔTE  
D'AZUR REGION, AS WELL AS THE CAPITAL OF THE BOUCHE-S-DU-  
RHÔNE DEPARTMENT. ITS INHABITANTS ARE CALLED MARSEILLAIS  
IN FRENCH AND MARSELHÉS IN OCCITAN. (WIKIPEDIA)

EXCURSION POSTE • 10/14 PT

MARSEILLE IS THE SECOND LARGEST CITY IN FRANCE, AFTER PARIS WITH A POPULATION  
OF 853,000 WITHIN ITS ADMINISTRATIVE LIMITS ON A LAND AREA OF 240.62 KM². IT IS THE  
THIRD LARGEST URBAN AREA AND METROPOLITAN AREA AFTER LYON WITH A POPULATION  
OF AROUND 1.6 MILLION. LOCATED ON THE SOUTHEAST COAST OF FRANCE, MARSEILLE  
IS FRANCE'S LARGEST CITY ON THE MEDITERRANEAN COAST AND LARGEST COMMERCIAL  
PORT. MARSEILLE IS THE CAPITAL OF THE PROVENCE-ALPES-CÔTE D'AZUR REGION, AS  
WELL AS THE CAPITAL OF THE BOUCHE-S-DU-RHÔNE DEPARTMENT. ITS INHABITANTS  
ARE CALLED MARSEILLAIS IN FRENCH AND MARSELHÉS IN OCCITAN. (WIKIPEDIA)



PAR-CI, PAR-LÀ

# EXCURSION FADABATS

EXCURSION FADABATS + FAIT DIVERS

ICI C'EST PASTIS

EXCURSION FADABATS + MÉTIER

ACHATEUR

EXCURSION FADABATS + CRYPTÉE

CLUB MED

EXCURSION FADABATS + POSTE

1 2 3 4 5 6 7 8 9


EXCURSION FADABATS + MIDI

DRIT AU BUT!

EXCURSION FADABATS + POSTE

NON MAI / ALLÔ EUOI

EXCURSION FADABATS • ÉQUIVALENTS CLAVIER

|  |  |  |  |  |  |  |
|--|--|--|--|--|--|--|
| <br>A   | <br>B   | <br>C   | <br>D   | <br>E   | <br>F   | <br>G   |
| <br>H   | <br>I   | <br>J   | <br>K   | <br>L   | <br>M   |  |
| <br>N   | <br>O   | <br>P   | <br>Q   | <br>R   | <br>S   |  |
| <br>T   | <br>U   | <br>V   | <br>W   | <br>X   | <br>Y   |  |
| <br>Z   | <br>[   | <br>a   | <br>b   | <br>c   |  |  |
| <br>d | <br>e | <br>f | <br>g | <br>h | <br>i |  |
| <br>j | <br>k | <br>l | <br>m | <br>n | <br>o | <br>p |
| <br>q | <br>r | <br>s | <br>t | <br>u | <br>v |  |
| <br>w | <br>x | <br>y | <i>Défense d'Afficher</i><br>z   |  |  |  |
| <i>Tél.</i><br>0   | <br>1 | <br>2 | <br>3 | <br>4 |  |  |
| <br>5 | <br>6 | <br>7 | <br>8 | <br>9 |  |  |

**EXCURSION**

UNE BOUILLABASSE  
DE CARACTÈRES FANTASQUES  
SANS BAS DE CASSE

COPYRIGHT © 2013 FANNY GARCIA & JACK USINE / SMELTERY  
TOUS DROITS RÉSERVÉS

DU SUD  
TABLE  
TEURS  
AGELR  
ACTURE

A A A

A A 

[WWW.SMELTERY.NET](http://WWW.SMELTERY.NET)